

DIKKEDEO

PABLO HELD

Handwritten musical notation for the first system. It consists of two staves. The top staff is in treble clef with a key signature of one sharp (F#) and a 4/4 time signature. It contains a melody with a triplet of eighth notes and a 4:5 ratio bracket. The bottom staff is in bass clef with a key signature of one sharp (F#) and a 4/4 time signature. It contains a bass line with a 4:5 ratio bracket.

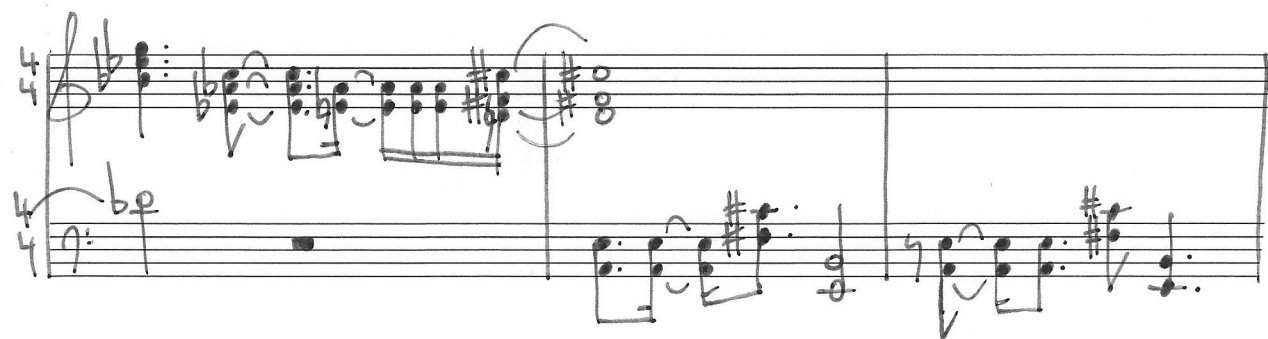
Handwritten musical notation for the second system. It consists of two staves. The top staff is in treble clef with a key signature of one sharp (F#) and a 4/4 time signature. It contains a melody with a 5:4 ratio bracket. The bottom staff is in bass clef with a key signature of one sharp (F#) and a 4/4 time signature. It contains a bass line with a 5:4 ratio bracket.

Handwritten musical notation for the third system. It consists of two staves. The top staff is in treble clef with a key signature of one sharp (F#) and a 4/4 time signature. It contains a melody with a 4:3 ratio bracket. The bottom staff is in bass clef with a key signature of one sharp (F#) and a 4/4 time signature. It contains a bass line with a 4:3 ratio bracket.

Handwritten musical notation for the fourth system. It consists of two staves. The top staff is in treble clef with a key signature of one sharp (F#) and a 4/4 time signature. It contains a melody with a 4:3 ratio bracket. The bottom staff is in bass clef with a key signature of one sharp (F#) and a 4/4 time signature. It contains a bass line with a 4:3 ratio bracket.

Handwritten musical notation for the fifth system. It consists of two staves. The top staff is in treble clef with a key signature of one sharp (F#) and a 4/4 time signature. It contains a melody with a 4:3 ratio bracket. The bottom staff is in bass clef with a key signature of one sharp (F#) and a 4/4 time signature. It contains a bass line with a 4:3 ratio bracket.

Handwritten musical notation for the sixth system. It consists of two staves. The top staff is in treble clef with a key signature of one sharp (F#) and a 4/4 time signature. It contains a melody with a 4:3 ratio bracket. The bottom staff is in bass clef with a key signature of one sharp (F#) and a 4/4 time signature. It contains a bass line with a 4:3 ratio bracket.



DIKKEDEO ②